



Plainview-Old Bethpage CSD 2017-2018

District Reserve Plan

June 19, 2017



Plainview-Old Bethpage Reserves

Reserve for Retirement Contributions

Current Funding \$9,836,267

Creation – This reserve was created on June 30, 2008.

Purpose – This reserve is used to pay for district expenses to the NYS Employees' Retirement System only. Payments to the Teachers' Retirement System are not allowed from this reserve.

Reserve for Accrued Employee Benefits Liability

Current Funding \$8,026,555

Creation – This reserve was created on June 30, 2008.

Purpose – This reserve is used to pay for unused accumulated leave time contractually provided to certain groups of employees. This typically includes payment for unused sick and vacation pay.

Reserve for Unemployment Insurance

Current Funding \$1,654,116

Creation – This reserve was created on June 30, 2010.

Purpose – This reserve is used to reimburse the State for payments made to claimants where the district uses the benefit reimbursement method.



Plainview-Old Bethpage Reserves

Repair Reserve

Current Funding \$996,849

Creation – This reserve was approved on May 21, 2013 via voter approval.

Purpose – This reserve is used to pay for unanticipated, non-recurring repairs to district capital improvements, facilities and equipment.

Capital Reserve Fund I – 2010

Current Funding \$192,108

Creation – This reserve was created on May 18, 2010 via voter approval.

Purpose – This reserve is used to pay the cost of any object or purpose consistent with the original voter approved proposition.

Capital Reserve Fund III – 2015

Current Funding \$12,500

Creation – This reserve was created on May 19, 2015 via voter approval.

Purpose – This reserve is used to pay the cost of any object or purpose consistent with the original voter approved proposition.

Capital Reserve Fund IV – 2017

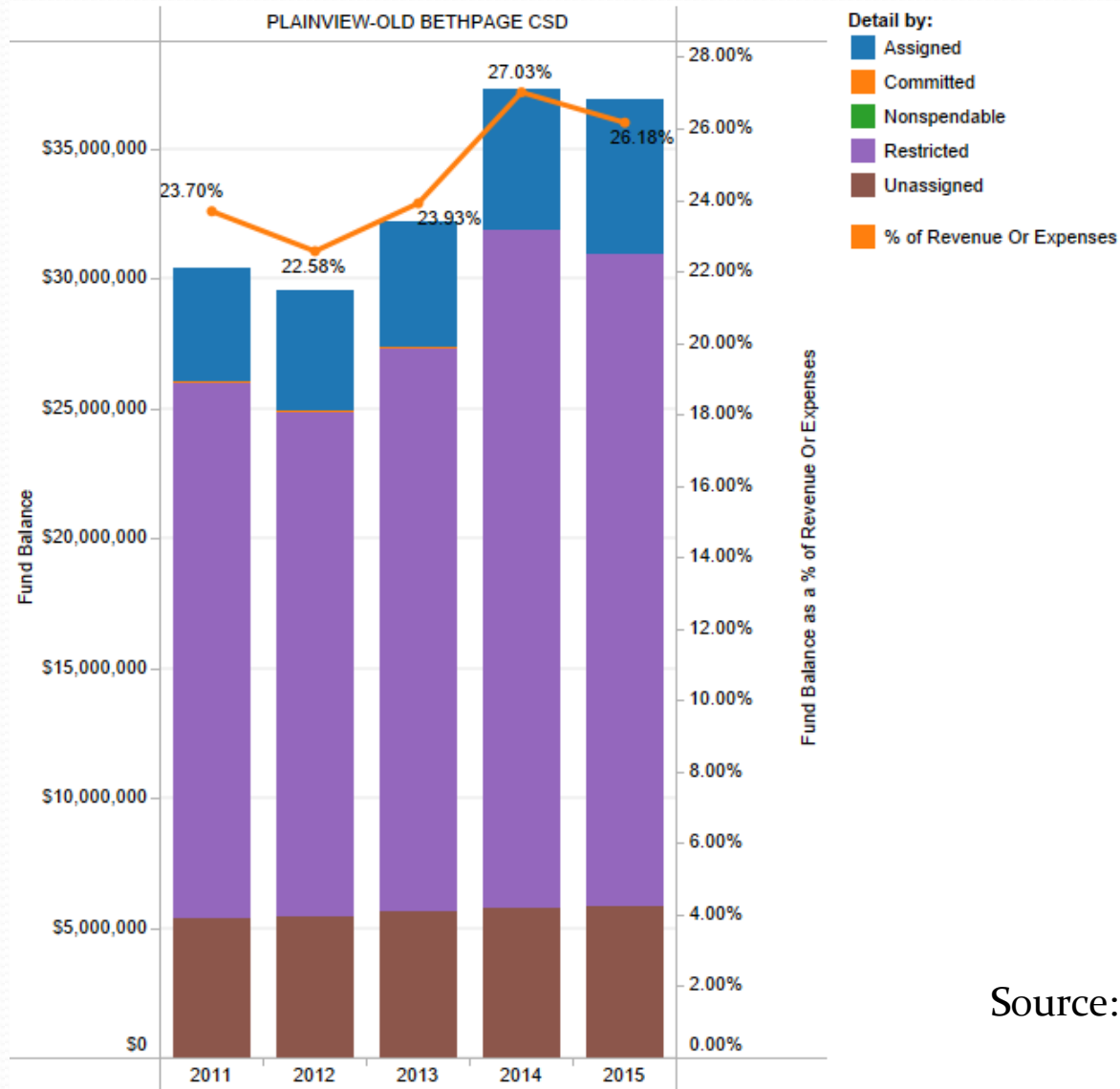
Current Funding \$0

Creation – This reserve was created on May 16, 2017 via voter approval.

Purpose – This reserve is used to pay the cost of any object or purpose consistent with the original voter approved proposition.

Fund Balance by Type and Percentage

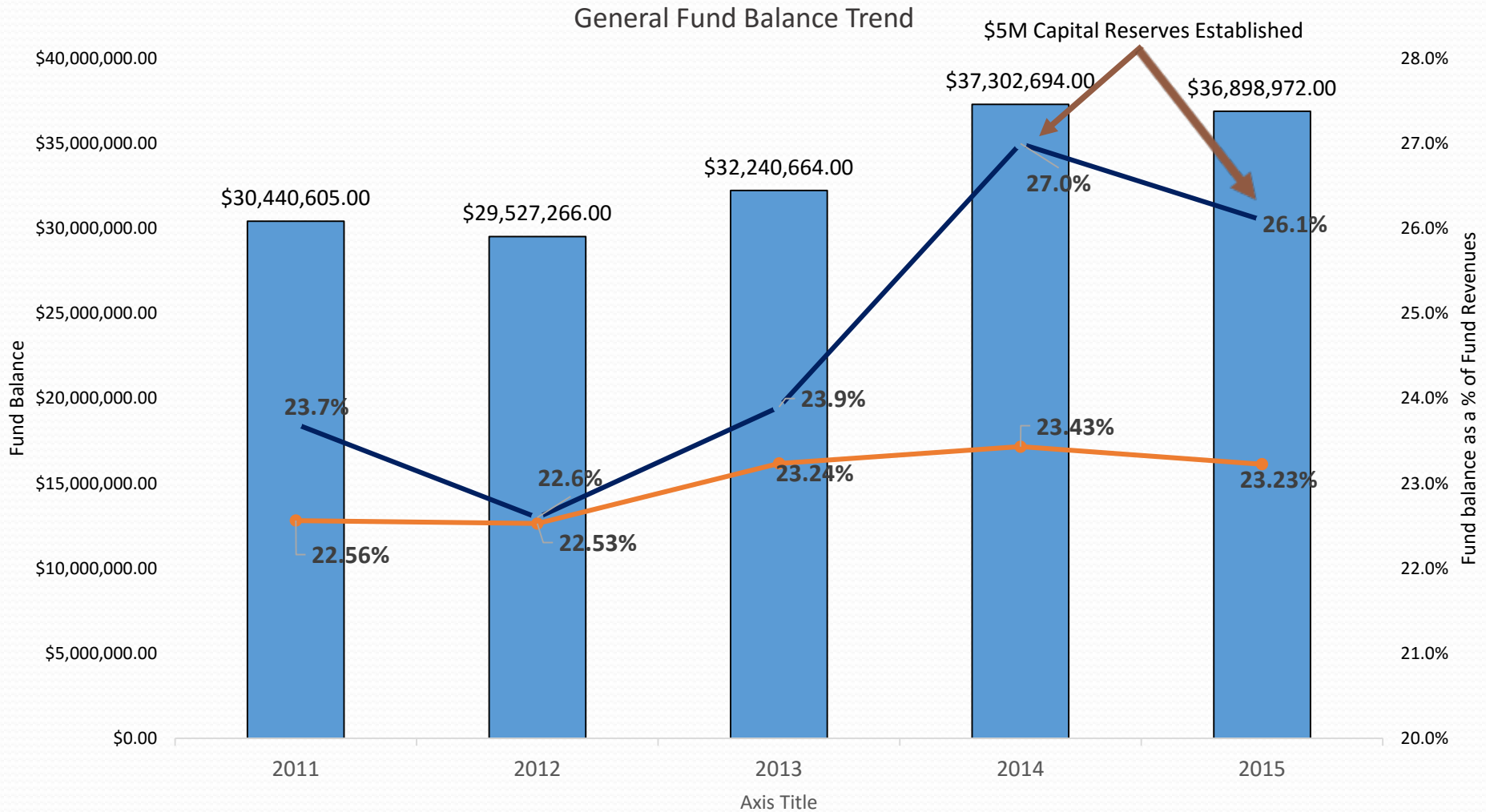
Shown as % of Revenue



Source: NYSED ST-3 Form

Fund Balance & Reserve Trend

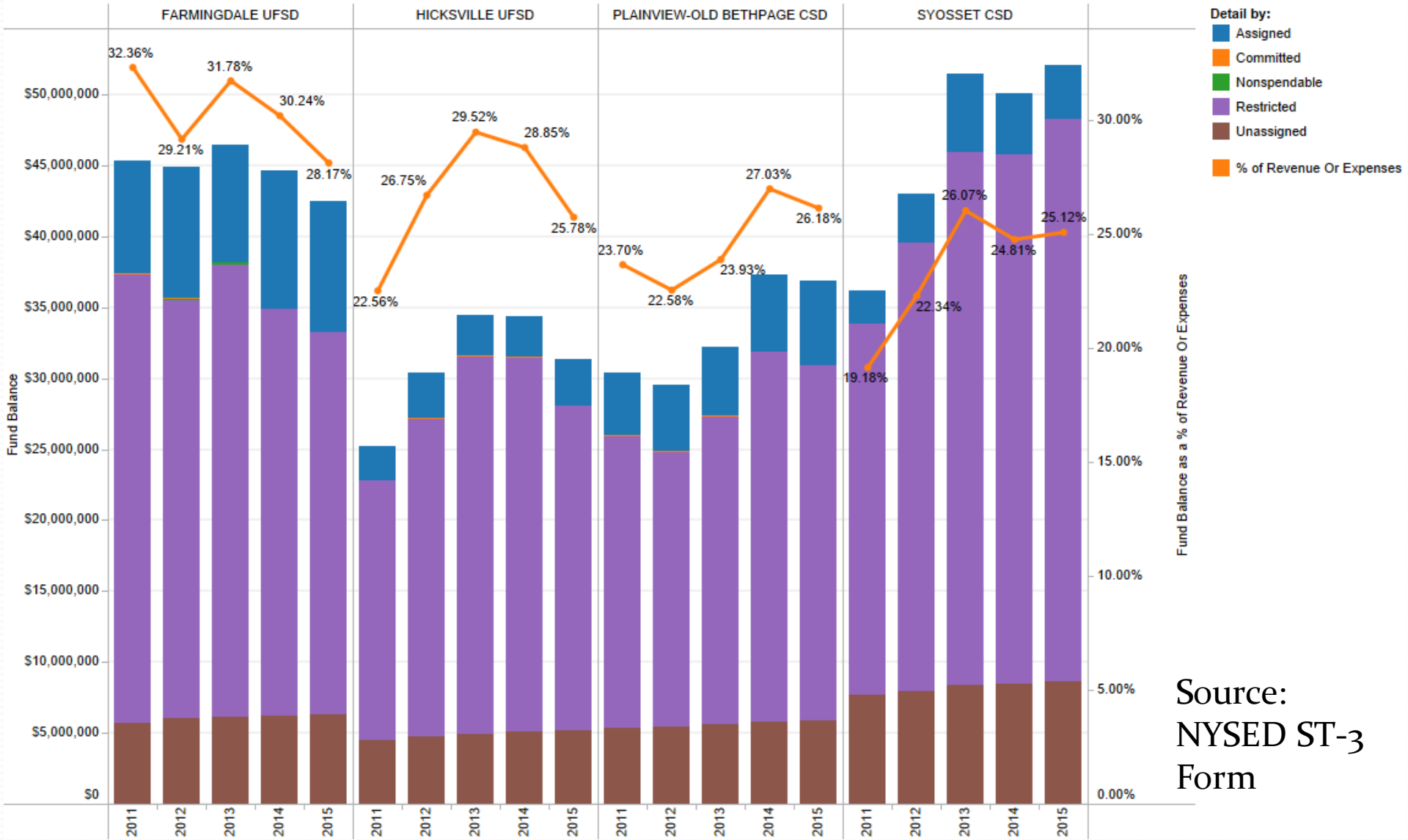
POB and Nassau County Average



- PLAINVIEW-OLD BETHPAGE CSD - Sum of Fund Balance
- PLAINVIEW-OLD BETHPAGE CSD - Sum of Fund Balance as a % of Revenue
- PLAINVIEW-OLD BETHPAGE CSD - NASSAU COUNTY AVG -Sum of Fund Balance as a % of Revenue

Fund Balance by Type and Percentage

A Comparison of Four Neighboring Districts Shown as % of Revenue



Plainview-Old Bethpage Reserves

Summary of Reserve Fund Balance Sheet

	Balance as per Financial Stmt June 30, 2016	Balance as of May 2017	Recommended Amount to Reaffirm (plus interest) June 2017	Use of Fund Balance
ERS Reserve	\$12,435,148	\$9,836,267	\$11,601,971	\$1,765,704
EBAL Reserve	\$8,226,555	\$8,026,555	\$8,659,022	\$632,466
Unemployment Reserve	\$1,719,116	\$1,654,116	\$1,710,000	\$55,884
Capital Reserve Fund 2010	\$192,108	\$192,108	\$193,188	\$1,080
Capital Reserve Fund 2015	\$12,500	\$12,500	\$12,500	\$0
Capital Reserve Fund 2017	\$0	\$0	\$6,000,000	\$6,000,000
Repair Reserve	\$996,849	\$996,849	\$1,000,000	\$3,151
Unassigned Fund Balance	\$6,077,907	\$6,077,907	\$6,087,874	\$9,967
Total	\$29,660,183	\$26,796,302	\$35,264,554	\$8,468,252



*POB Schools:
A Smart Investment
THANK YOU!*

